

Aluma EasySet



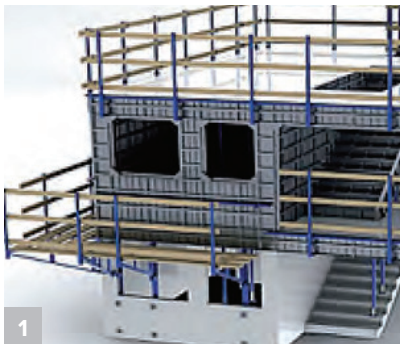
Aluma EasySet is an integrated forming and shoring system that can be used in virtually any application where reinforced cast-in-place concrete is the specified method of construction.

Aluma EasySet is an industrialized system for mass construction which is well suited for mass housing or multiple-unit housing developments and any particular concrete configuration (houses, buildings, hotels, prisons, warehouses, columns, staircases etc)

Aluma EasySet

Product description	Monolithic & Two-Stage Casting Formwork System
Material	T6061 Aluminum Alloy
Panel lengths	Max. Wall: 3.0 m Max. Slab: 1.2 m
Panel widths	10 15 20 25 30 35 40 45 50 55 60 cm
Panel thickness	60 mm
Form lining	Aluminum face sheet 3.2 mm to 3.5 mm
Average weight	Approx. 20 kg/m ²
Max. concrete pressure	60 kN/m ² (6,100 kg/m ²)
Standard connection	Pin & wedge (Ø16 mm pin)
Special features	Aluminum extrusion panels with “interlocking system” Integrated pin assembly allow easy handling Stripping joints on slab forms speed up panel removal Stripping joints on wall formwork further increase speed Starter panels provide “invisible cold joint” Unique stair form for multilevel structures

Product advantages



1 Fully Monolithic form for simultaneous casting of walls, slabs, windows and doors



2 Undisturbed reshoring for faster cycle times



3 Integrated monolithic stair forms (single and multi-flight stairs)



4 Chamfered side and end rails facilitate stripping from the completed structure



5 Starter panels allow clean exterior joint between vertical pours



UAE
P: +971 4 8132000

QATAR
P: +974 4 4664176

MALAYSIA
P: +60 3 42965455

KSA
P: +966 12 6917690

EGYPT
P: +20 2 23591568

SINGAPORE
P: +65 68 626122