

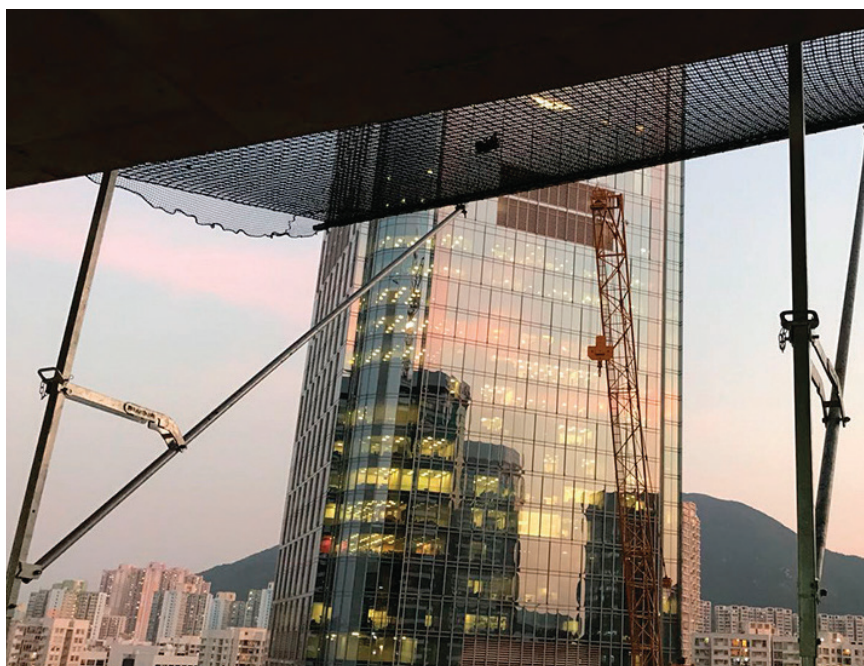
SAFETY NET

Protection system



▶ GENERAL CHARACTERISTICS

Product description	RAPID EPS SAFETY NET
Application	<ul style="list-style-type: none"> Designed in the UK and tested to BS EN 1263 with 2 x 100kg weights dropped from 6 metres. The purpose of these nets is to prevent the fall of people or materials from an open edge. Edges of floors (Horizontal use, attached to projecting structures). Standard dimensions: 3.1m x 4m and 3.1m x 6m but we can manufacture to any size.



▶ SGB can provide the fall arrest net erected around a building perimeter, to catch both escape of persons and material. SGB Net not only protects site staff working on a building but also the public below from any potential falling debris.