

Slab Shoring Systems

ALUMALITE TRUSS TABLE FORM



Modular truss system enables faster beam and slab construction to reduce cycle times.

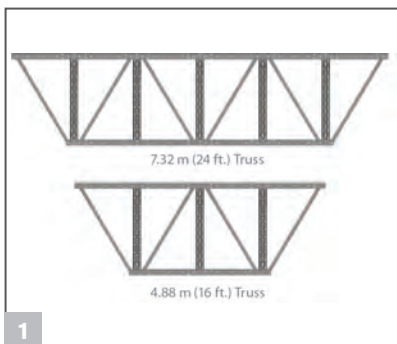
Adjustment can be made in both length and height for different structural designs.

Slab Shoring Systems

ALUMALITE TRUSS TABLE FORM

Product description	High-capacity aluminum frame shoring system
Material	Aluminium 6061 – T6
Max allowable udl	$W = 38.9\text{kN/m}$
Std truss lengths	7.32 m 4.88 m 3.66 m 2.44 m 1.22 m
Structural	Suitable for flat slabs, and beam and slab structures
Operating range	Both top and bottom extensions are available
Unit weight:	Varies depending on structural requirements
Manipulation	Flown by crane or manoeuvred horizontally on the slab by using glides or rollers
Relevant norms	CSA CA-OSHA ANSI.
Special features	<ul style="list-style-type: none"> ● Patented Double-Hollow Extruded Legs. ● Outer Leg and Extension Staffs ● Beamside Hinge Forming ● Attachments - Swivel Roller, Single Low Glide, Standard Glide, Truss Lowering Device, Landing Dolly, Nylon Sling

Product advantages



The Alumatite® Truss with a unique modular design based on 1.22 m (4 ft.) sections allow adjustment in length and height for different structural designs



Outer Legs & Extension Staffs



The Alumatite® Truss System offers a variety of truss handling equipment making it easy to strip and maneuver the table for easy flying



Patented Double-hollow extruded legs enable use of Extension staffs at top and bottom of the table forms



Steel Packer & Top Jack Bracket Assembly

BRAND
ENERGY & INFRASTRUCTURE SERVICES

Brand Energy & Infrastructure Services, Inc.

Harsco House, Regent Park,
299 Kingston Road,
Leatherhead, Surrey KT22 7SG
United Kingdom
Tel: +44 (0)1372 381 300
Fax: +44 (0)1372 381 399
Web: www.beis.com
Email: info@beis.com