

Formwork

DU-AL™ Aluminium Beams



The DU-AL aluminium beams are a set of lightweight primary and secondary waling beams.

Aluminium is light and strong and therefore allows for larger assemblies of formwork, which in turn reduces the labor cost of fixing and erecting.

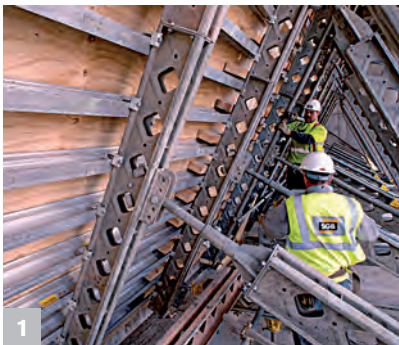
Formwork

DU-AL™ Aluminium Beams

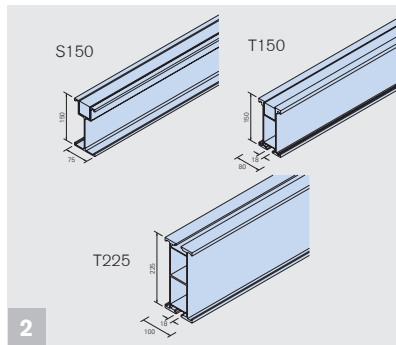
Product description Aluminium waling beams

Overall dimensions	T225: 10 x 22.5 cm T150: 8.0 x 15 cm S150: 7.5 x 15 cm
Weight	T225: 8.92 kg/m T150: 5.43 kg/m S150: 3.24 kg/m
Standard lengths	T225: 100 180 240 300 360 420 480 540 600 720 750 900 1000 cm T150: 100 120 130 160 180 250 360 390 420 480 500 540 600 640 720 cm S150: 100 120 180 270 360 420 510 640 720 cm
Moment of resistance	T225: 29.25 kNm T150: 13.00 kNm S150: 6.80 kNm
Standard connection	T-Bolt clamp (to forkhead) Universal clamp
Application	T225: Primary waling beam T150: Primary/secondary waling beam S150: Secondary waling beam

Product advantages



1 Lighter than timber allowing for fast and larger assemblies of formwork



2 Three different types of beams, each with varying application properties



3 Fast and simple installation saving labor related costs



4 Highly durable representing a good investment



5 Compatibility with a variety of systems

BRAND
ENERGY & INFRASTRUCTURE SERVICES

Brand Energy & Infrastructure Services, Inc.

Harsco House, Regent Park,
299 Kingston Road,
Leatherhead, Surrey KT22 7SG
United Kingdom
Tel: +44 (0)1372 381 300
Fax: +44 (0)1372 381 399
Web: www.beis.com
Email: info@beis.com