

Slab formwork

TOPEC®



The TOPEC modular slab formwork provides fast forming times and maximum safety during forming and stripping operations from the ground.

The aluminum modular formwork system without beams. The up to 180 x 180 cm panels are erected by a maximum of two men. They are simply hooked into the bearing, lifted up, and propped.

Slab formwork

TOPEC®

Product description	Modular slab formwork
Panel widths	45 60 75 90 180 cm
Panel lengths	90 180 cm
Adjustment panel	55 - 90 x 90 cm 55 - 90 x 180 cm
Profile thickness	14 cm aluminum frame profile
Form lining types	ECOPLY Q plastic lining Plywood (340 g/m²)
Form lining thickness	11 mm ECOPLY Q 10 mm plywood
Weight per panel	Panel 180 x 90 cm = 22.2 kg Panel 180 x 180 cm = 47.1 kg
Relevant DIN-norms	Complies with DIN 18202
Maximum slab thickness	75 cm (with 60 cm wide panels)
Corrosion protection	Powder-coating
Standard shoring	EUROPLUS ^{new} slab props 20 kN 30 kN
Special shoring	MODEX scaffolding
Bearings	TOPEC bearing Edge support N Drop head
Assembly/stripping times	t = 0.2 - 0.4 h/m²
Special features	<ul style="list-style-type: none"> ● Adjustment panels (fully telescopic) ● ECOPLY Q plastic composite form lining ● Alternatively with TOPEC drop head for early striking ● EUROPLUS^{new} with quick-lowering mechanism ● TOPEC lift hydraulically positions the panels exact and flush

Product advantages



1 Robust yet lightweight aluminum design provides easy and ergonomic handling



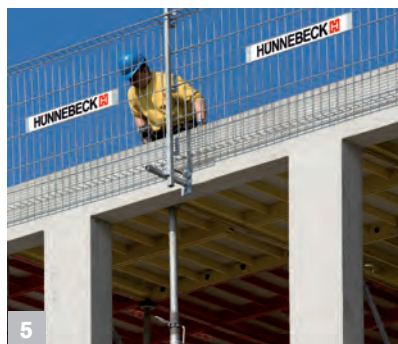
2 Safe forming and stripping up to a height of 3.5 m from the ground in 3 easy working steps



3 One-of-a-kind giant panel 180 x 180 cm covers a forming area of 3.24 m²



4 Flexible due to various adjustment parts and alternatives



5 Integrated safety measures with the PROTECTO edge guard

BRAND
ENERGY & INFRASTRUCTURE SERVICES

Brand Energy & Infrastructure Services, Inc.

Harsco House, Regent Park,
299 Kingston Road,
Leatherhead, Surrey KT22 7SG
United Kingdom
Tel: +44 (0)1372 381 300
Fax: +44 (0)1372 381 399
Web: www.beis.com
Email: info@beis.com